



Dynalon®  
Labware



Pharmaceutical ~ Food ~ Cosmetic

# Sampling

the safe way

## The right pump for each liquid

Pumps are used in widely different fields of application. Bürkle offers a large number of different versions. However, when choosing a suitable pump several criteria must be considered. The most important are the viscosity, structure and density of the liquid. How the liquid behaves under the influence of external influences, e.g. variations in temperature and pressure, is also important.

## Viscosity – what actually is viscosity?

The viscosity characterizes the flow behavior of a liquid. High-viscosity liquids are thick, low-viscosity liquids thin. This viscosity results from intermolecular forces; these are also known as the internal friction. This internal friction decreases as the temperature increases and increases as the temperature decreases. The dynamic viscosity is given in Pascals, for low-viscosity liquids in mPas. It is defined as the force in newtons that is necessary to displace a liquid layer of 1 m<sup>2</sup> and 1 m height along a boundary parallel to a second layer at a speed of 1 m per second.

## Typical viscosity values in mPas at 20 °C

Kerosene	0.65	Blood (37 °C)	4 – 25	Olive oil	~ 100
Water	1.0	Coffee cream	~ 10	Hydraulic oil	~ 120
Mercury	1.5	Glycol	40	Yogurt	~ 150
Grape juice	2 – 5	Condensed milk	80	Motor oil 15W40	390

## Viscosity using motor oil as an example

Everyone has heard of the viscosity terms for motor oil. This classification is based on the flow behavior of the motor oil as a function of the temperature. In Winter low-viscosity oils are required. In Summer the oil becomes hotter, but it must still remain sufficiently thick. For example: SAE 5W-40. The first number defines the viscosity at 0 °F (-18 °C), the second for a temperature of 210 °F (99 °C). An oil with the classification 5W (W=Winter) is therefore thinner than a 15W motor oil under cold conditions.



## Take samples the right way

Correct sampling is very important in the context of quality assurance. It is essential if you want to have reliable and accurate data about the quality, properties or composition of a specific material.

You can carry out very precise material analysis using the most



modern techniques. However, if a mistake is made in sampling then even these modern techniques are useless because the initial sampling error is carried through all the steps of the analysis and incorrect results will be obtained. This means that a correct statement about the properties of a substance can only be made if the samples are taken and handled with the same care and accuracy as is used in the subsequent analysis. It all comes down to the fact that the properties and composition of the sample itself must correspond exactly to those of the material from which it has been taken.

## Take samples, but how?

A few basic steps must be observed when taking samples. It is recommended that you operate according to an internal company procedure, which should be a fixed component of the quality standards of every company. All relevant sampling steps should be written down and carried out accordingly.

### Sampling site

The site where sampling is carried out must be as clean as possible. If this is impossible due to external factors then, at the very least, care should be taken that clean equipment and auxiliary devices are used. During the sampling process care must be taken that no external factors alter the sample. Even small impurities could falsify results. Detergents that are used for cleaning the sampler and sample packaging can also alter results.



## Take samples, but who?

### Skilled workers

Only skilled workers with special training should take the samples. Sampling has to be carried out exactly in accordance with given guidelines. Skilled workers are able to recognize altered on-site conditions and react quickly to minimize the risk of sample contamination. A skilled worker recognizes malfunctions and changed conditions more quickly and analyzes them accordingly.





### Take samples, but using what?

#### Sampling equipment

The selection of the correct equipment is subject to many criteria. It depends on the material properties as well as the type of sampling, the containers in which the material is located, and the frequency of sampling. In addition to individual requirements, all equipment should fulfill the basic principles explained below.

#### Material

The equipment should be made of inert materials from which nothing can escape to contaminate the sample. Of course, this depends on the corrosiveness of the medium to be sampled. As a rule, equipment made of stainless steel and high quality synthetic or plastic material – especially fluoropolymers – is well suited.

#### Cleaning

It should be easy to clean the equipment quickly and – under certain conditions – to sterilize it. Depending on your needs, sterile-packed disposable samplers could be appropriate; these can be disposed of after use.

#### Processing

Equipment that is reused should not have any grooves or crevices. Residual material collects in such crevices and cannot be easily removed; cross contamination can be a concern.

#### Surfaces

Equipment with especially smooth surfaces has proved to be especially well suited, for example, electropolished stainless steel or fluoropolymers. Such materials minimize deposits and greatly simplify cleaning. When selecting sampling equipment, you should take care to check that it is properly finished both inside and outside.

#### Sampling techniques –

##### Physical and analytical sampling

A distinction is made between physical and analytical sampling. In physical sampling, the bulk density, material distribution, material properties and – when required, coloring or contamination are determined. It is especially important in this case that the sampler does not damage or destroy the material while withdrawing it. Also, keep in mind that a sample taken on



site still has to be transported. You must also take care during transport and packing that the sample reaches the laboratory non-contaminated. In the analytical method, special attention must be paid to purity in addition to the aspects listed above. On the other hand, the material properties can be disregarded sometimes, because the sample will be specially processed. In this case equipment can be used which changes the physical properties of the material.

## Sampling techniques

### Multilayer sample

A sample is taken through all material layers to provide a representative cross-section.

### Targeted sample

A targeted sample is taken from a pre-determined point. This is done to determine the material state precisely at this point or several targeted samples are taken over a larger area or in a large volume container. All target-point samples averaged together provide a representative cross-section of the material content.

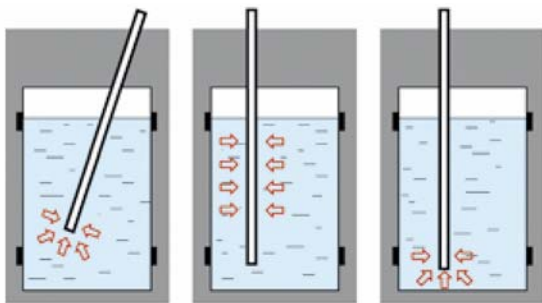
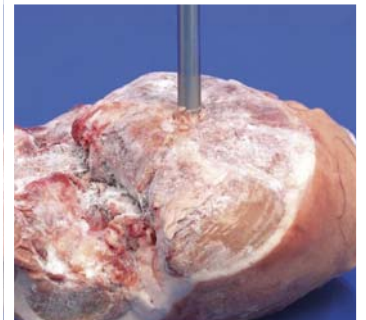
### Completion of the sampling procedure

After the sample has been withdrawn, the sample must be packed for transport. Clean sampling containers connected directly to the sampling equipment – without intermediaries – are ideal. The sample has no contact with the outside environment and is packed for transport at the same time. The same conditions relating to the sampling equipment apply to packaging, storage, and transport. Here too you should pay attention to the cleanliness of the packaging material and the risk of contamination from escaping substances. The containers are then labeled and taken to a laboratory – if necessary in coolers. Coolers with temperature monitors are ideal, to ensure that peak storage temperature is maintained.

### Tip

If you take samples from sacks or bags, the insertion points can be reclosed with special labels. You can write on these labels, which will even stick firmly onto soiled surfaces.

Contact us via e-mail ([loninfo@dyna-labware.com](mailto:loninfo@dyna-labware.com)) or telephone 800-334-7585 with any further questions.



Point sampling

Cross-sectional sampling

Bottom sampling

## Overview on sampling equipment

Product	Page	Liquids, normal	Liquids, aggressive	Liquids, flammable	Viscous substances/muds	Ice	Bulk goods, powders	Bottom sampling	Pharma	Sterile
All-layer scratcher	25						x			
All-layer drill	30						x			
AquaSampler	16	x	x							
BeafSteaker	19				x					
Dip sampler	9	x								
Dippas	6-7	x							x	x
Dippers	5	x	x							
Disposable DispoSampler	22-23	x	x		x				x	x
Drum Sampler	9	x	x							
EasySampler	27						x		x	
IceBorer	19				x	x				
Liquid-sampler	10	x								
LiquiSampler	11	x	x							
Liquid Cup Sampler	10	x	x							
MicroSampler	25						x		x	
Milky	24						x			
Mini Immersion Cylinder	16	x	x							
Mini ViscoSampler	21				x				x	
MiniSampler	12-13	x	x							
Pigment lance	18				x		x			
Pipette	20	x								
Profi-Sampler	14-15	x	x							
QualiRod	18				x					
QuickPicker	26-27						x		x	
Sampler / Ladle	8	x	x							
Scoop / Ladle	7-8	x					x			
Spiralus	28-29						x			
TeleScoop	17	x								
Tubus	24						x			
Valve lance	21				x		x			
ViscoSampler	20				x					
Zone sampler	28-29						x		x	



**Liquid Sampling & Stirring Kit, HDPE**



- FDA Compliant HDPE
- Purchase individual components or as an entire kit
- Dipper kit includes 3 convenient handle lengths and 3 popular beaker capacities
- Stirrer kit includes 3 convenient handle lengths and two paddle heads
- Sampling kit includes 3 convenient handle lengths and 2 popular bottle capacities
- Mega complete kit includes 3 convenient handle lengths and all beaker, paddle and sampler options

Dynalon's new versatile modular liquid handling series fits all your needs. Whether sampling from drums or rail cars, stirring vats or dipping chemicals from a bath... we have the configuration to fill your requirements. Components are available piecemeal, as intuitive kits or buy the entire mega kit to cover all your bases. Interchangeable threaded components make using this product line quick, fun and easy!

Catalog Number	Description	UOM	Price
107035-1000	Dipper Sampling Kit (1 each below)		\$219.85
107035-0001	1.5' Handle	EA	37.70
107035-0002	3' Handle	EA	45.94
107035-0003	6' Handle	EA	58.07
107035-0004	250mL Dipping Beaker	EA	33.02
107035-0005	500mL Dipping Beaker	EA	34.11
107035-0006	1000mL Dipping Beaker	EA	40.87
107035-2000	Stirrer Kit (1 each below)		\$1783.07
107035-0001	1.5' Handle	EA	37.70
107035-0002	3' Handle	EA	45.94
107035-0003	6' Handle	EA	58.07
107035-0007	Stirring Paddle	EA	24.74
107035-0008	Perforated Mixing Paddle	EA	36.97
107035-3000	Liquid Sampler Kit (1 each below)		\$273.01
107035-0001	1.5' Handle	EA	37.70
107035-0002	3' Handle	EA	45.94
107035-0003	6' Handle	EA	58.07
107035-0009	Sampler with Bottle 100mL	EA	65.70
107035-0010	Sampler with Bottle 500mL	EA	95.94
107035-5000	Complete Liquid Sampling & Stirring Kit		\$397.48
	(Consists of 1 each above -0001 to -0010)		



107095



107065-01

**Dippers HDPE**

- Graduated
- PVC hand grip
- FDA compliant
- 2 pour spouts (left or right handed)
- 500ml & 1000ml beaker

High density polyethylene dipper for removing samples from large tanks. Lightweight but durable. Available in seven popular sizes. 500mL capacity dippers feature graduation markings of 50ml and 1000mL is graduated in increments of 100mL. \*12-foot size supplied with 2-piece handle for economy in shipping and storage. Additional sizes available upon request.

	107065	107075	107085	107095
Handle Length feet	1.5	3	6	12*
Capacity ml	500	500	500	500
Price Each \$	33.34	41.87	60.50	119.61

	106505	106515	106525
Handle Length feet	3	6	12*
Capacity ml	1000	1000	1000
Price Each \$	59.65	72.88	122.36



**Dippers PTFE**

Totally inert and non-contaminating. Extendible screw-in shafts have a steel core for rigidity and are fully encapsulated in PTFE. The basic unit consists of a beaker with a single 24" (600mm) shaft.

	307024	-0100	-0250	-0500	-1000
Capacity ml	100	250	500	1000	
Body Diameter mm	54	66	80	100	
Shaft Length mm	600	600	600	600	
Price Each \$	179.22	198.39	239.64	312.49	

307024-HAND Replacement screw-on handle \$97.80 each



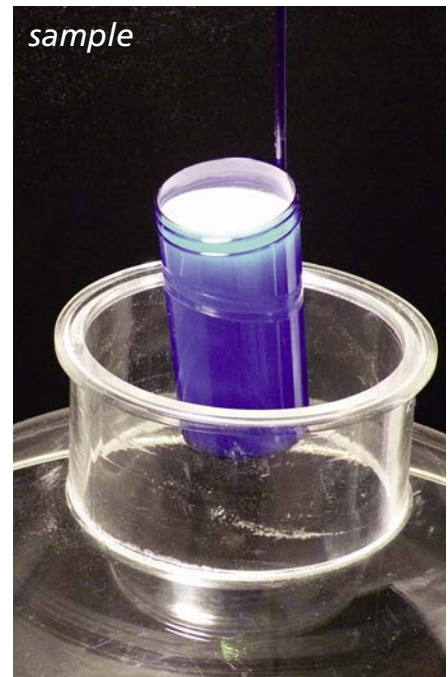


Dippas are individually wrapped to ensure complete sterility.



Available in either transparent polystyrene or shatterproof polypropylene in three different capacities.

Blue Dippas and Dippers are highly visible in product samples.



Designed for sample collection and dispatch from one source, thus eliminating the risk of cross contamination.



Closures are supplied in either PP or Metal in PS Dippas and in PE or PP in Polypropylene dippers.



Handles are easily removed, enabling the sample to be sent away for analysis.



Sample collection and transportation to the laboratory in a single container.



“Dippas®” Sterile PS



- Dippas are designed for sample collection and despatch from one source, thus eliminating the risk of cross contamination
- Dippas are available in transparent polystyrene
- Handles are easily removable, facilitating transport
- All dippas are supplied sterile by irradiation and are individually wrapped to ensure complete sterility
- Blue dippas are highly visible in product samples



507054	-0030	-0100	-0250	-B030	-B100	-B250
Description	Clear	Clear	Clear	Blue	Blue	Blue
Handle Length mm	200	385	330	200	385	330
Capacity ml	30	100	250	30	100	250
Cap Material	PP	METAL	METAL	PP	METAL	METAL
Height mm	93.1	76.4	120.6	93.1	76.4	120.6
Diameter	30.1	50.5	65.1	30.1	50.5	65.1
Case Quantity	50	100	50	50	100	50
Case Price \$	117.29	344.07	221.06	123.09	352.69	228.91



**NEW** Volumetric Scoops, Flat Bottom PP



Autoclavable Polypropylene scoops shaped conveniently for sampling solids or liquids. Flat bottom with beveled angles for easy cleaning. Marked in milliliters. Suitable for foodstuff.

208065	-0010	-0025	-0050	-0100	-0250	-0500	-1000
Length mm	32	43.8	55.4	67	94	112	141
Width mm	103	137	163	201	261.5	315	386.6
Height mm	16	21	26	34	43.7	55	69.4
Liquid Capacity ml	10	25	50	100	250	500	1000
Case Quantity	4	4	4	4	2	2	2
Case Price \$	8.13	11.27	18.37	25.84	27.41	41.28	48.54



## Liquid Samplers | collectors for light and medium viscosity substances



### Scoops/Ladles HDPE

High density polyethylene, high-temperature extra heavy duty bowl with securely welded solid handle. Handy for sampling and dispensing corrosive liquids. Note: 600ml size is graduated and supplied with 2 pour spouts. Additional sizes available upon request.



108085	-50	-100	-250	-600	-1000
Capacity ml	50	100	250	600	1000
Handle Length inches	9	9	9	10	12
Price Each \$	13.15	14.20	15.52	17.07	39.65

### Sampler/Ladle PTFE

This sampler-ladle is made from pure PTFE and is supplied with a fixed 6" (150mm) handle. Totally inert. 10ml capacity. Dimensions: top ID 1" and bottom OD is 3/4".

307014

\$53.52 each



*See additional dippers on page 5.*



### Large Scoop HDPE

Fabricated, heavy duty polyethylene scoop with many industrial applications. Large, approximately 1 gallon capacity. Bowl size is 7 1/2" x 10 1/2" with long 6 3/4" handle. Half-gallon scoop has bowl size 5 3/4" x 8" with 5 1/2" handle.



107154-0001	Large Scoop (1 gallon)	\$57.08 each
107154-0005	Small Scoop (1/2 gallon)	\$43.69 each



### Scoops, Economy Round Bottom HDPE

**Kartell**

Designed for heavy industrial and laboratory applications, the round shape design facilitates complete transfer of the sampling material. Suitable for food grade products.

208075	-0250	-0500	-1000	-1500
Capacity ml	250	500	1000	1500
Price Each \$	9.01	10.83	15.03	16.63

*All scoops and ladles are food grade quality.*



**Drum Sampler HDPE**

- Food grade product

Similar to the Liquid Sampler below, but specifically designed for easy, effective sampling of 55 gallon drums or vessels with openings as small as 2" ID.

The included bottle easily passes through the opening for quick filling. The handle prevents dropping of sampler into the opening of the drum. All rods are 1 1/4" O.D. Additional sizes available upon request.

114505-0100	Drum Sampler, 3' handle, 100mL	\$152.73 each
114515-0100	Drum Sampler - 6' handle, 100m	\$188.13 each
114525-0100	Drum Sampler - 8' handle*, 100mL	\$234.63 each
202445-0100	100ml PP Graduated Bottle	\$34.44 pack of 10

**Liquid Sampler HDPE**



- Food grade product

Manufactured from chemically resistant high density polyethylene, this sampling device is perfect for corrosive environments and for hard to reach places. The included bottle (202445-0500 bottle) screws into the end of the handle and is filled via four 5mm diameter ports (2 allowing liquid to enter and 2 allowing air to escape.) Excellent for industrial and environmental applications. All rods are 1 1/4" O.D. Additional sizes available upon request. \*2-piece handle for UPS shipment. **Please note: 500mL bottle does not fit through standard drum opening.**

114505-0500	Liquid Sampler, 3' handle, 500mL	\$152.73 each
114515-0500	Liquid Sampler - 6' handle, 500mL	\$188.13 each
114525-0500	Liquid Sampler - 8' handle*, 500mL	\$234.63 each
202445-0500	500ml PP Graduated Bottle	\$33.31 pack of 5

*Additional sizes and configurations available for HDPE Drum and Liquid Samplers!*



**DipSampler - for liquids**

Made of PP for rapid and simple spot checks of liquids. The dip samplers are translucent and enable the contents to be seen clearly. Upper end with reflux valve, lower end with ball valve.

- Transparent PP
- Special sizes on request
- All-layer sample and target sample
- Food grade product

**Operation**

All-layer sample

1. Insert the dip sampler with opened valve slowly into the liquid
2. Close the valve
3. Withdraw the dip sampler. Remove the sample.

Target sample

1. Insert the dip sampler with closed valve into the liquid until the target spot
2. Open the valve. The liquid flows in.
3. Close the valve.
4. Withdraw the dip sampler. Remove the sample.

5315	-0050	-0100	-0200
Capacity mL	140	280	500
Length cm	50	100	200
Diameter mm	22	22	22
Price Each US\$	76.94	82.56	99.25



Liquid-Sampler - single hand operation

Liquid-Sampler for single hand operation. The valve is opened and closed using your thumb for type 1 or semi automatically for type 2. Made of AISI 304 stainless steel.

	①	①	②	②
<b>5326</b>	<b>-0001</b>	<b>-0002</b>	<b>-0003</b>	<b>-0004</b>
Length mm	460	540	455	535
Diameter mm	32	32	32	32
Capacity mL	50	100	50	100
Price Each US\$	301.58	335.80	362.11	406.11



Liquid Cup Sampler - single hand operation

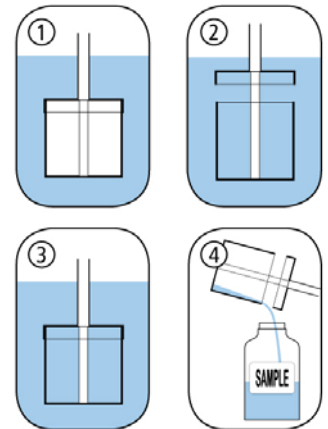
- Autoclavable

Collects liquids of varying viscosity. Media containing particles can also be sampled without difficulty. The sampler can be used in the fields of chemistry, food-stuffs and cosmetics. The cup can be unscrewed from the stem, allowing easy cleaning. Made completely of AISI 316 stainless steel.

<b>5357</b>	<b>-0001</b>
Total Length mm	1120
Container Diameter mm	55
Capacity mL	100
Price Each US\$	1,306.12



1. Place the collector at the desired depth.
2. Open the lid using the handle. The liquid flows in.
3. Close the filled collector and remove it.
4. Empty the sample into the sample bottle.





## LiquiSampler - the ultra-pure sample collector for liquids

- Food grade product

**LiquiSampler** for liquids, according to DIN 53 242. Made of either ultra-pure and chemically inert PTFE/FEP for contamination-free sampling or cost effective PP.

Sampling from open and closed barrels, vats, tanks, silos, open waters (ponds, streams, lakes, rivers). Fits all commercially available vats and barrels with openings of at least 25 mm diameter.

**Color coded push-buttons** in red, blue, green, yellow, white and black, identifies usage.

**Easy cleaning** – all surfaces are free of pores and crevices, preventing accumulation of dirt. Only round screw threads proven in foodstuffs hygiene are used. Disassembly and cleaning is extremely simple.

- Easy-to-use one-hand push-button operation
- Transparent
- For point sampling, cross-sectional sampling and bottom sampling

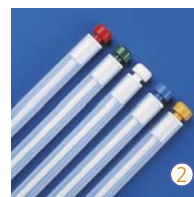
Any mistakes made during sampling or sampling division will inevitably lead to incorrect analytical results! Take samples, but do it right! How this can be done: see pages 1-3.

	① -2060	① -2100	① -2200
Material	PTFE/FEP	PTFE/FEP	PTFE/FEP
Length cm	60	100	200
Diameter mm	25	25	25
Capacity mL	150	250	500
Price Each US\$	431.25	570.62	787.58

	① -1060	① -1100	① -1200
Material	PP	PP	PP
Length cm	60	100	200
Diameter mm	25	25	25
Capacity mL	150	250	500
Price Each US\$	276.31	367.85	550.27

## ACCESSORIES

	② 5330-0149	5304-0100	5618-1000
Description	Set of 5 color coded, push buttons, yellow green, blue, white and black (red = standard)	Cleaning brush 100cm for tubes with diameter 15 - 26 mm	Drain safety stand with bottle ID 55mm
Price Each US\$	47.55	72.36	83.90



Color coded handles



With depth marks and scraping ring



Discharge funnel



It can't be easier - with push-button





With the MiniSampler and ProfiSampler the sample liquid only comes into contact with the suction hose and the sample bottle. The possibility of cross-contamination is greatly reduced therefore. Immediately after having taken the sample, the bottles are sealed using an airtight cap and with tamper-evident safety ring seal. The single-use, flexible, suction hose can be quickly replaced, thus ensuring that the samples are never contaminated. If necessary, a new hose can be used for every single sample. Due to its small diameter (5/16" / 8mm) and flexibility the hose can reach sampling areas which are otherwise inaccessible.

Three models are available

**MiniSampler PE** for general sampling, max. suction lift 5 m\*

**MiniSampler PTFE** for ultra-pure sampling, max. suction lift 5 m\*

**ProfiSampler PP** for industrial use, max. suction lift 6 m\*

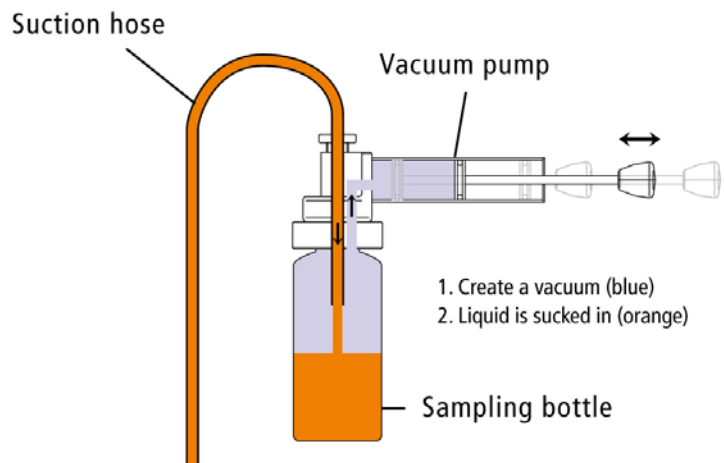
\*depending on medium

- Also suitable for viscous oils
- Complete in a practical transport case

Not for aggressive acids. Vapors could damage pump.

#### Operation

1. Place hose and bottle in pump.
2. Insert hose end to desired sample depth.
3. Move the pump piston back and forth and collect the sample. The liquid flows directly into the bottle.
4. Take off the filled bottles, close and label them.



## MiniSampler PE - for general sampling

Contents: Vacuum pump, 10 PE bottles 100 ml, 10 m PE suction tubing 6 x 8 mm, 1 tubing cutter, 1 tubing weight made of stainless steel AISI 304, 20 seal-it bottle seals

- Ideal for sampling from drums, canisters, tanks
- Sampler with accessories complete in transport case

**5305-0100 MiniSampler with Case, PE \$313.94 each**

### BOTTLES FOR USE WITH MINISAMPLER PE

	<b>0340</b>	<b>-0100</b>	<b>-0250</b>	<b>-0500</b>	<b>-1000</b>
Capacity mL		100	250	500	1000
Materials		PE	PE	PE	PE
Pack Quantity		25	25	25	25
Pack Price US\$		79.50	97.21	113.94	147.74

### ACCESSORIES FOR USE WITH MINISAMPLER PE

	<b>8878-0608</b>	<b>8805-0608</b>	<b>5305-0010</b>
Description	Suction tubing, PE reel of 100 m	Suction tubing, PE reel of 10 m	MiniSampler pump w/ adapter
Price Each US\$	95.82	27.75	135.97

	<b>0006-9506</b>	<b>5305-0209</b>
Description	Tubing cutter	PTFE adapter for glass thread GL45
Price Each US\$	14.87	241.23



## MiniSampler PTFE - for ultra pure sampling

Contents: Vacuum pump, 1 PFA bottle 180 ml, 5 m PTFE suction tubing 6 x 8 mm, 1 tubing cutter, 1 tubing weight made of stainless steel AISI 304, 20 seal-it bottle seals

- Ideal wherever the highest degree of purity is required.
- Sampler with accessories complete in transport case.

**5305-0110 MiniSampler with Case, PTFE \$515.55 each**

### BOTTLES FOR USE WITH MINISAMPLER PTFE

	<b>6205</b>	<b>-0090</b>	<b>-0180</b>
Capacity mL		90	180
Materials		PFA	PFA
Price Each US \$		111.54	144.38

### ACCESSORIES FOR USE WITH MINISAMPLER PTFE

	<b>8804-0608</b>
Description	Suction tubing, PTFE reel of 5 m
Price Each US\$	78.20

	<b>5305-0011</b>	<b>5305-1020</b>
Description	MiniSampler pump without Adapter	Adapter PTFE for sampling bottles 6205-0090 and 6205-0180
Price Each US\$	86.53	182.13

	<b>0006-9506</b>	<b>5305-0209</b>
Description	Tubing cutter	PTFE adapter for glass thread GL45
Price Each US\$	14.87	241.23







## ProfiSampler

While the MiniSampler (see page 12) is designed for laboratory use, the ProfiSampler has been specially developed for rough industrial use.

### Uses

Sampling liquids in drums, tanks, road tankers, railroad wagons, ships, lakes, ground water.

### Vacuum samplers

have the advantage that the liquid only comes into contact with the sample tubing and not with the pump itself. This ensures that contamination is kept as low as possible and that the purity of the sample is ideal. The liquid passes through the sample tubing, enters the original sample bottle directly and then goes straight to the laboratory.

### Advantages

- Larger dimensions and ergonomic handle allow handling with rubber gloves, as is often required in practical sampling.
- Support stand with 3 feet ensures that the ProfiSampler is stable.
- Can be supplied with rolls of PE or PTFE sampling tubing wherever the highest degree of purity is required.
- Can be supplied with optimized, straight suction tube for simpler sampling.
- Transport case for tidy transport and disposal
- Filling level control, automatic return flow and overflow protection by built-in venting valve.
- Optimized suction volume 200 ml, suction pressure 0.5 bar and suction depth down to 4 m/water.

### ProfiSampler PP

For general sampling, for weak acids, bases, detergents, chemical baths\*.

Made of solid, chemical-resistant polypropylene. With GL 40 bottle thread for Multi-Bottle 500 ml.

\* Always check the chemical resistance of parts coming into contact with the sample. Wear protective clothing!

### Accessories

The ProfiSampler can be extended by useful accessories developed in practice.



**Suction tubes PE**

can be immersed absolutely straight in the container. The suction tube is made of PE for general sampling. 220 cm long with bent end piece which can be inserted directly in the ProfiSampler. Diameter 6 x 8 mm.

**Contamination banned!** In practice the low-priced tubes are only used once and then disposed of, instead of being subjected to a costly cleaning process. Tubes are not autoclavable.

**Suction tube case**

for the practical transport of new suction tubes and the safe storage of used ones. For 100 suction tubes 220 cm long.

- Sampling bottles in different materials and sizes
- Sampling bottles 5314-0050 and -0100 now made of borosilicate glass for even better temperature and acid resistance
- Suction height from surface of liquid 5 m WC

**ProfiSampler Polypropylene**

Consisting of: solid PP vacuum pump, with feet, venting valve and GL 40 bottle thread, 1 x 250 ml PP bottle, 10 m PE suction tubing (roll), 1 tubing cutter, 1 hose weight made of AISI 304 stainless steel, 24 sample labels, 24 seal-it bottle seals.

**5305-1000 ProfiSampler Polypropylene \$636.89 each**



**SUCTION TUBING ON ROLL AND SAMPLING BOTTLE**

	<b>8878-0608</b>	<b>8805-0608</b>
Description	Suction tubing/roll	Suction tubing/roll
Material	PE	PE
Length	6 x 8 mm, roll with 100 m	6 x 8 mm, roll with 10 m
Price Each US\$	95.82	27.75

	<b>8804-0608</b>	<b>0319-0250</b>
Description	Suction tubing/roll	Sampling Bottle
Material	PTFE	PP
Length	6 x 8 mm, roll with 5 m	250 mL capacity GL 40 Cap Size
Price Each US\$	78.20	39.43 / PK10

**SUCTION TUBES, STRAIGHT**

	<b>5305</b>	<b>-1022</b>	<b>-1029</b>
Material	PE translucent		Transport Case for straight suction tubes
Length cm	200		
Pack Quantity	10		
Pack Price US\$	201.51		248.15 each



# AquaSampler & Mini Immersion Cylinder



## AquaSampler - ultra-pure non-stick, highly transparent

AquaSampler collects ground water samples from wells, pits and other sources. Fits all normal well shafts down to 2" diameter without tilting or getting stuck. Ultrapure materials guarantee the greatest possible sample purity. Easy to clean thanks to rounded edges and threads.

- FEP/PTFE – ultrapure, anti-adhesive surface

### Accessories

- Sturdy manually operated cable reel
- Plunging cable, AISI 304 stainless steel, PTFE coated

### AQUASAMPLER WITHOUT CABLES

5308	-0350	-0700	-1050
Capacity mL	350	700	1050
Total Length mm	400	760	1070
Outside Diam. mm	46	46	46
Price Each US\$	501.27	566.80	655.07



Safe and sure pouring



Hand-reel

### HAND-SPOOL PP WITH WIRE CABLE AISI 316, COVERED WITH PTFE

5309	-0010	-0110	-0125	-0150
Description	Hand Spool Without Cable	Wire Cable 10 m, AISI 304/PTFE	Wire Cable 25 m, AISI 304/PTFE	Wire Cable 50 m, AISI 304/PTFE
Price Each US \$	135.97	62.17	147.52	285.76

### ACCESSORIES FOR AQUASAMPLER

	3600-2120
Description	Transport Case
Price Each US\$	192.28



## Mini immersion cylinder

- Stainless steel V2A (1.4301)
- Screw-off top enables easy cleaning
- Wire cables and spool available listed above
- 50 ml contents
- Height 180 mm
- Weight 350 g

Dipping containers are used in various areas to collect liquids for sampling. Dipping vessels are heavy. Lowering requires the use of special manually-operated drum reels with a large winding diameter. For sampling liquids in narrow places where access is difficult. Can also be used in curved dipping tubes and barrels with narrow openings.

### Use

When the dipping vessel is lowered, the liquid constantly runs through it. When it is pulled back, both valves close automatically. It can be emptied via the base valve or the upper screw-off cap.

	5365-5000
Capacity mL	50
Diameter mm	32
Height mm	180
Price Each US\$	477.83





**TeleScoop - sampling products for industry and water treatment**

TeleScoop is a versatile system with exchangeable tools for a wide range of sampling applications. Collect samples from baths, tanks, shafts, lakes, rivers, streams etc. The beaker and bottle holders attach to a Telescopic Rod of varying lengths.



**Telescopic Rod AL**

The beaker and bottle holders attach to the telescopic rod via a snap-in joint. Each rod is of varying length and has an end stop preventing one rod from slipping out. The telescopic aluminum rod #5355-0280 varies in length from 95 to 280cm (37.4" - 110") for convenient transport.

5355	-0120	-0250	-0280	-0300	-0450	-0600
Number of Rods	2	2	4	3	3	4
Length range cm	65-120	125-250	95-280	115-300	165-450	175-600
Price Each US\$	57.45	74.29	114.88	116.01	160.38	196.82

**Bottle Holder PP with LDPE 750mL**

Holds round bottles up to 1 liter in size. The holder can be rotated up to 90° and tightened, making it adaptable to fit into collection containers of different shapes. Comes with a Wide Mouth 750mL LDPE bottle.

5354	-4100
Bottle Capacity mL	750
Price Each US\$	129.53



**Beaker Holder PP with PP Beaker**

The holder can be rotated up to 90° and tightened, making it adjustable to fit into containers of different shapes. Includes a beaker that can be easily cleaned.

5354	-0050	-0100
Beaker Size mL	600	1000
Price Each US\$	109.32	111.59



**Replacement Bottles**

301605	-0008	-0016	-0032
Material	HDPE	HDPE	HDPE
Capacity mL	250	500	1000
Pack Quantity	12	12	6
Price US\$	33.94	48.11	41.53

501505*	-0250	-0500	-1000
Material	PP	PP	PP
Capacity mL	250	500	1000
Pack Quantity	12	12	6
Price US\$	60.04	71.17	42.46

\* Graduated bottle with white marking area.



**QualiRod - for pastes**

**Conical** hand-drill, conically shaped, with sharp cutting edges and a solid handle. For taking samples from soft, paste-like substances (cheese, butter, soap, wax, etc.).

- AISI 304 Stainless steel
- Sterilizable
- According to EN/ISO 707

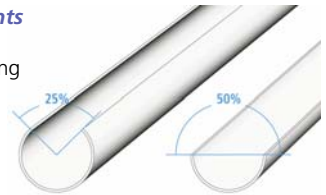


**Cylindrical** hollow drill with a sharp cutting edge. The hand-drill can easily be driven into paste-like and semi-solid substances by a rotating movement. The samples cut out are subsequently removed from the drill using the push-rod ejector. Drilling depth 200 mm, total length 260 mm, weight 386 g. Inside diameter 8 mm, Outside diameter 10 mm.

5311	-0001	-0002
Description	Conical	Conical
Drilling Depth mm	120	170
Price Each US\$	99.16	159.52

**Pigment lance - for pastes and pigments**

For pigments and pastes and agglomerating bulk goods.



**Two models are available**

- With half-open flute 50%
- With one-quarter-open flute 25%
- SSV4A

**Operation**

1. Insert the lance to the desired depth.
2. Turn handle; the sample is collected in the open flute.
3. Withdraw the lance.
4. Remove the sample.



5369	-0300	-0310
Length mm	300	300
Diameter mm	30	30
Flute openings	25%	50%
Capacity mL	145	85
Material	AISI 316	AISI 316
Price Each US\$	339.67	369.93

5369	-0600	-0610
Length mm	600	600
Diameter mm	30	30
Flute openings	25%	50%
Capacity mL	312	179
Material	AISI 316	AISI 316
Price Each US\$	489.37	531.54

5369	-0900	-0910
Length mm	900	900
Diameter mm	30	30
Flute openings	25%	50%
Capacity mL	480	273
Material	AISI 316	AISI 316
Price Each US\$	658.24	712.23



**BeefSteaker, SS**

For taking bacteriological samples from the surfaces of dead animals (cattle, hogs, sheep, goats and horses) in slaughter house and in butcher shops. The BeefSteaker is used to cut out a 25 mm round sample from the animal's skin. The stainless steel cutter allows the sample to be cut out easily.

The BeefSteaker can also be used for other sampling purposes (e.g. histology, medicine, food products cheese factories, agriculture)

The BeefSteaker can be steam-sterilized or flamed. A hole in the crown prevents air compression and is used for ejecting the sample.



	5388-1000	3600-0101
Description	BeefSteaker	Transport Case
Cutter Crown Diameter mm	25	NA
Price Each US\$	351.48	21.98

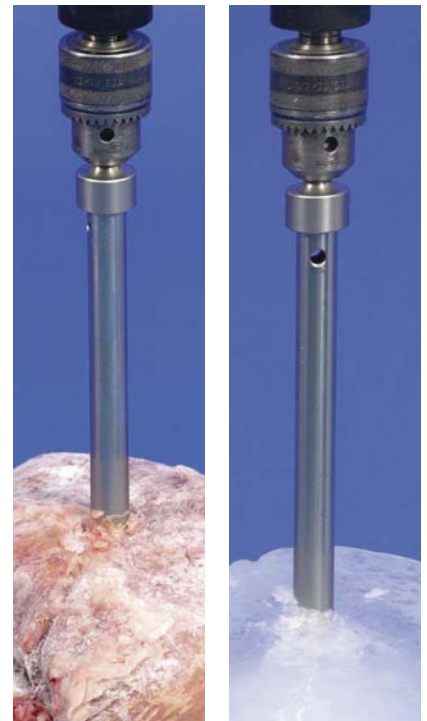
**Ice borer - for deep-frozen and semi-solid substances**

For deep-frozen products in the food industry and semi-solid substances. The sharp sawing crown of the very robust hollow borer rapidly cuts into the sample. A cylindrical sample (cross-sectional sample) with a diameter of 18 mm and a length of up to 200 mm can be cut out. Consists of three parts: borer, borer head for use in conventional drills and rod for pressing the cylindrical sample out of the borer head.

- made of AISI 316 stainless steel
- sterilizable
- 200 mm long, 21 or 54 mm outer diameter



5323	-0200	-2010
Description	Ice borer	Ice borer
Inner Diameter mm	18	50
Price Each US\$	487.23	839.66



# ViscoSampler | collector for medium viscosity substances & Wide Orifice Pipette



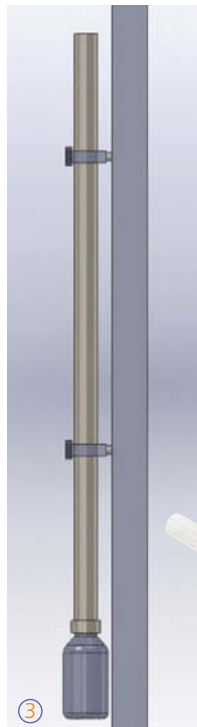
Color coded handles



With depth marks and scraping ring



Discharge funnel



## ViscoSampler - the ultra-pure sample collector for medium viscosity substances

- Food grade material

ViscoSampler with powerful suction for viscous media. The media is drawn up and discharged using the suction flask made of transparent PP or ultra-pure and chemically inert PTFE/FEP for contamination-free sampling. Specially developed for viscous substances; such as slurries, silt, wet clay and soil samples, soil sediments, oils, emulsions, creams etc.

**Color coded handles** in red, blue, green, yellow, white and black avoid confusion. Red is the standard color supplied with the ViscoSampler.

**Easy cleaning** – all surfaces are poreless and without crevices to prevent dirt accumulation. Only those round threads tried and tested in food hygiene are employed. Disassembly and cleaning is very easy.

**Storage** – use the wall mountable drain safety stand with bottle to collect sample drippings.

- Available in transparent PP or FEP/PTFE
- Three sizes

### VISCOSAMPLER

	①	①	①
<b>5331</b>	<b>-2060</b>	<b>-2100</b>	<b>-2200</b>
Material	PTFE/FEP	PTFE/FEP	PTFE/FEP
Length cm	60	100	200
Diameter mm	25	25	25
Capacity mL	160	300	650
Price Each US \$	572.90	650.42	919.65

	①	①	①
<b>5331</b>	<b>-1060</b>	<b>-1100</b>	<b>-1200</b>
Material	PP	PP	PP
Length cm	60	100	200
Diameter mm	25	25	25
Capacity mL	160	300	650
Price Each US \$	427.10	504.36	748.68

### ACCESSORIES

	②	③	③
<b>Description</b>	<b>5331-0020</b> 5 handles, yellow green, blue, white and black	<b>5304-0100</b> Cleaning brush 100cm for tubes with diameter 15 - 26 mm	<b>5618-1000</b> Drain safety stand with bottle ID 55mm
<b>Price Each US \$</b>	78.79	72.36	83.90

## Wide Orifice Graduated Pipette - for sampling small volumes of viscous substances

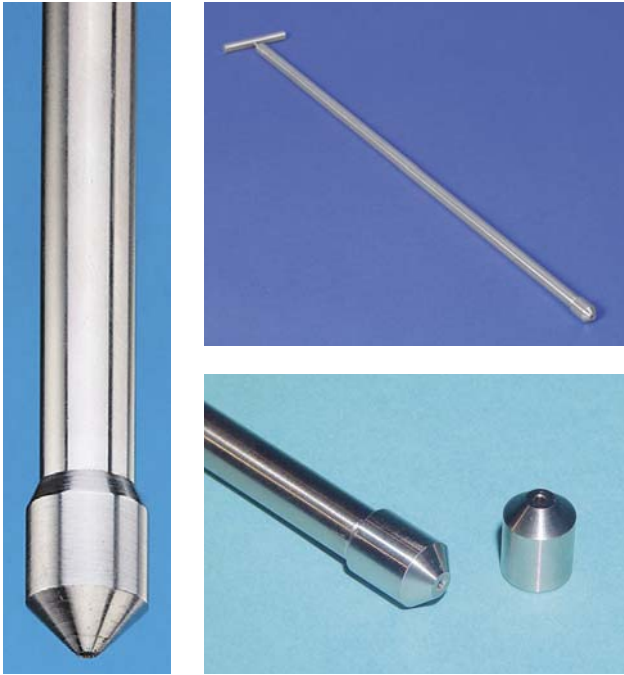
- 10mL capacity with 0.1mL sub divisions

Translucent polypropylene. Resistant to breakage. Blue graduations, ring mark and inscriptions. Use with pipettor. Recommended cleaning with mild alkaline detergent up to 60°C. Note: Exposure to temperatures above 60°C may cause volume changes. Additional sizes available upon request.

102774-0010

Wide Orifice Graduated Pipette, 10mL

\$15.82 each



**Mini ViscoSampler - for small quantities**

For viscous substances like pastes, muds, creams, oils. Made of AISI 316 stainless steel, electropolished and ideal for use in pharmaceutical areas. The sample is drawn in using the pump rod and directly conveyed to the sampling container. Easy cleaning for flawless sampling. Suction capacity 30 ml to 75 ml. Depending on the viscosity, the unscrewable suction head can be fitted with suction drills of 2 mm to 6 mm.

- AISI 316 Stainless steel
- Ideal in pharmaceutical areas
- Sterilizable
- Diameter 15 mm

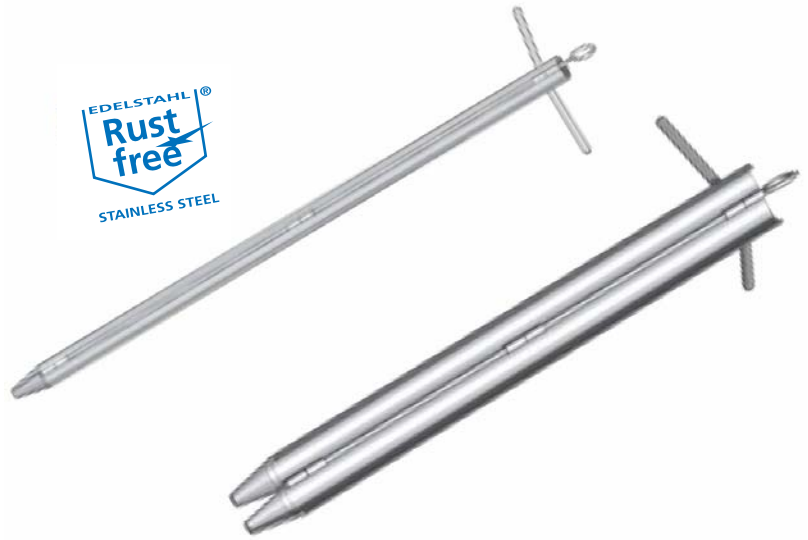


**MINI VISCOSAMPLER WITH 2MM SUCTION HEAD**

5341	-1060	-1100	-1150
Total Length cm	60	100	150
Price Each US\$	463.65	538.27	658.06

**SUCTION HEADS - MINI VISCOSAMPLER exchangeable**

5341	-1002	-1004	-1006
Diameter mm	2	4	6
Price Each US\$	72.08	72.08	72.08



**Valve lance**

Sampling insertion device acc. to DIN 51750 pt. 3 and DIN 53242 pt. 3 for multilayer samples of pastes, viscous and semiliquid substances. Especially useful when sampling layered pastes, as all layers remain intact. Stainless steel AISI 316, length 550 mm or 800 mm with optimized hinges for easier cleaning – fully detachable.

Operation

For **viscous substances**, the valve lance is inserted to the bottom whilst **closed**, then opened and then withdrawn again closed. When sampling **pastes**, the valve lance is inserted to the bottom whilst **opened**, then closed and withdrawn again.

**VALVE LANCE**

5359	-1600	-1800
Material	Stainless Steel AISI 316	Stainless Steel AISI 316
Length mm	550	800
Price Each US\$	2,217.78	2771.58

**ACCESSORIES FOR VALVE LANCE**

	3600-2120
Description	Transport Case
Price Each US\$	192.28



## Single Use DispoSamplers | for the highest standards in sampling

### Time is money—compare the costs:

- Bring to cleaning area
- Remove sampler
- Cleaning agent
- Work time
- Autoclaving in some cases
- Drying
- Mount sampler
- Packaging if required
- Transport and storage

Due to the effort involved in cleaning and the costs associated with it, it is often more economical to use a Bürkle disposable sampler.

- For disposable use
- Individually packaged
- Production, assembly and packaging in class 7 clean room (10,000)
- With EU foodstuffs and FDA approval
- Optionally sterilized by gamma rays

**LaboPlast**

**SteriPlast**



①



②



③



④



The Bürkle single use samplers – DispoSampler – are used to take samples of liquids, viscous media, powders and granulates. Target point samples can be taken, all-layer and cross-section samples, as well as small and large sample quantities. Unlike conventional reusable samplers, these samplers do not need to be cleaned after use.

- Cleaning reusable samplers is a demanding and often complicated task, with greasy, strongly adhesive or toxic substances. Sometimes the task is even impossible
- Work processes do not have to be interrupted by cleaning
- Cross contamination is completely eliminated
- The cleaning method does not need to be validated in audits
- Time and money are saved

① **LiquiDispo** for low-viscosity liquids up to approximately 10,000 mPa·s. (21mm diameter)

② **MicroDispo** for pourable bulk goods up to 0.5 mm particle size. (21mm diameter)

③ **ViscoDispo** for high-viscosity liquids up to max. 100,000 mPa·s. (21mm diameter)

④ **ZoneDispo** for pourable bulk goods up to 2 mm particle size. For cross-section samples through all layers of a sample. Three openings, hole diameter 11 mm. (22mm diameter)

⑤ **MultiDispo** taking samples from multiple layers of the sample material suitable for free-flowing powders and small-grain granulates. Easy emptying through the opening in the handle (Ø 14 mm)

⑥ **TargetDispo** target point sample at a position in the sample material that has previously been precisely determined. Easy emptying through the opening in the handle (Ø 14 mm)

⑦ **DispoPipette** for taking samples of liquids which are low in viscosity. (21mm diameter)

⑧ **PowderDispo** ideal for taking a cross-sectional sample from within a bulk powder. Length of sample chamber 500mm. (22mm diameter)

⑨ **DispoPicker** for powders and small-grain bulk materials. Because the tip is closed, the sample material cannot trickle back out of the sample lance.

⑩ **DispoLance** used for taking large and small sample quantities quickly and easily, directly from bags. The sampler is suitable for free-flowing powders and small-grain granulates.

⑪ **DispoTube** The ergonomic handle of the DispoTube makes it easier to work and facilitates a good grip even under difficult conditions, for example with gloves.

## Disposable DispoSamplers | *unpack, take sample, recycle*

<b>① 5393</b>	<b>-1120</b>	<b>-1121</b>	<b>-1130</b>	<b>-1131</b>
Description	LiquiDispo	LiquiDispo	LiquiDispo	LiquiDispo
Material	HDPE	HDPE Sterile	HDPE	HDPE Sterile
Capacity mL	100	100	200	200
Length mm	500	500	1000	1000
Price Pack of 20 US\$	203.72	238.45	252.47	310.22
<b>② 5393</b>	<b>-2240</b>	<b>-2241</b>	<b>-2250</b>	<b>-2251</b>
Description	MicroDispo	MicroDispo	MicroDispo	MicroDispo
Material	HDPE	HDPE Sterile	HDPE	HDPE Sterile
Capacity mL	10	10	10	10
Length mm	500	500	1000	1000
Price Pack of 20 US\$	226.10	262.18	280.33	347.74
<b>③ 5393</b>	<b>-3320</b>	<b>-3321</b>	<b>-3330</b>	<b>-3331</b>
Description	ViscoDispo	ViscoDispo	ViscoDispo	ViscoDispo
Material	HDPE	HDPE Sterile	HDPE	HDPE Sterile
Capacity mL	100	100	200	200
Length mm	500	500	1000	1000
Price Pack of 20 US\$	203.72	236.14	250.02	310.22
<b>④ 5393</b>	<b>-4420</b>	<b>-4421</b>	<b>-4430</b>	<b>-4431</b>
Description	ZoneDispo	ZoneDispo	ZoneDispo	ZoneDispo
Material	HDPE	HDPE Sterile	HDPE	HDPE Sterile
Capacity mL	100	100	200	200
Length mm	500	500	1000	1000
Number of Holes	3	3	3	3
Price Pack of 20 US\$	302.49	338.97	359.90	401.26
<b>⑤ 5393</b>	<b>-4440</b>	<b>-4441</b>	<b>-4450</b>	<b>-4451</b>
Description	MultiDispo	MultiDispo	MultiDispo	MultiDispo
Material	HDPE	HDPE Sterile	HDPE	HDPE Sterile
Capacity mL	100	100	200	200
Length mm	500	500	1000	1000
Number of Holes	3	3	3	3
Price Pack of 20 US\$	332.78	372.87	404.55	446.11
<b>⑥ 5393</b>	<b>-4460</b>	<b>-4461</b>	<b>-4470</b>	<b>-4471</b>
Description	TargetDispo	TargetDispo	TargetDispo	TargetDispo
Material	HDPE	HDPE Sterile	HDPE	HDPE Sterile
Capacity mL	100	100	200	200
Length mm	500	500	1000	1000
Number of Holes	1	1	1	1
Price Pack of 20 US\$	288.99	321.24	353.57	385.26
<b>⑦ 5393</b>	<b>-5500</b>	<b>-5501</b>	<b>-5531</b>	<b>-5532</b>
Description	DispoPipette	DispoPipette	DispoPipette	DispoPipette
Material	HDPE	HDPE Sterile	HDPE	HDPE Sterile
Capacity mL	100	100	200	200
Length mm	500	500	1000	1000
Price Pack of 20 US\$	134.27	158.96	157.42	196.37
<b>⑧ 5393</b>	<b>-5510</b>	<b>-5511</b>	<b>-5522</b>	<b>-5521</b>
Description	PowderDispo	PowderDispo	PowderDispo	PowderDispo
Material	HDPE	HDPE Sterile	HDPE	HDPE Sterile
Capacity mL	60	60	100	100
Length mm	300	300	620	620
Price Pack of 20 US\$	172.99	196.37	199.09	217.61
<b>⑨ 5393</b>	<b>-5540</b>	<b>-5541</b>	<b>-5550</b>	<b>-5551</b>
Description	DispoPicker	DispoPicker	DispoPicker	DispoPicker
Material	HDPE	HDPE Sterile	HDPE	HDPE Sterile
Capacity mL	60	60	100	100
Length mm	300	300	500	500
Price Pack of 20 US\$	152.78	179.42	175.94	199.09
<b>⑩ 5393</b>	<b>-5560</b>	<b>-5561</b>	<b>-5570</b>	<b>-5571</b>
Description	DispoLance	DispoLance	DispoLance	DispoLance
Material	HDPE	HDPE Sterile	HDPE	HDPE Sterile
Length mm	300	300	500	500
Price Pack of 20 US\$	157.42	180.57	189.83	212.98
<b>⑪ 5393</b>	<b>-6620</b>	<b>-6621</b>	<b>-6630</b>	<b>-6631</b>
Description	DispoTube	DispoTube	DispoTube	DispoTube
Material	HDPE	HDPE Sterile	HDPE	HDPE Sterile
Capacity mL	100	100	200	200
Length mm	500	500	1000	1000
Price Pack of 20 US\$	152.78	177.66	185.19	216.07



⑤



⑥



⑦



⑧



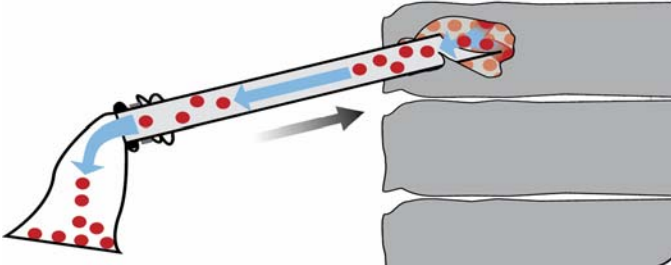
⑨



⑩



⑪



**Tubus - the sampler for bulk goods**

Simple, inexpensive sampler for free flowing bulk goods up to approximately 10 mm diameter. This makes it possible, for example, to remove hazel nuts, blends of tea, grain or similar items from large sacks.



**Operation**

Insert Tubus into a sack to the desired sampling depth, while keeping the collection tube closed using your hand. When you take away your hand, the sample flows directly through the open tube into the container or sampling bag beneath it.

- Choice of 2 lengths, 400 mm and 800 mm
- Also for coarse-grained bulk goods
- AISI 316 stainless steel
- Corresponds to ISTA standard for seed lengths of 20 mm (beans, corn) and 10 mm (wheat, oats).

5382	-0040	-0080
Length mm	400	800
Diameter mm	40	40
Price Each US\$	202.51	263.86



**Milky - sampling lance according to EN ISO 707\***

Milk powder collector made of AISI 316 stainless steel, sterilizable. Developed especially for milk powder samples, conforms to standards of DIN and IDF (Int. Dairy Federation). The collector is inserted into bags or casks and the sample is removed using a semi-circular profile lance.

- Insertion depth 385 mm, total length 480 mm
- Outer diameter approximately 28 mm
- Now made of AISI 316 stainless steel

\* DIN 10327, IDF 50C: 1995



	5321-0300
Sample Capacity mL	150
Price Each US\$	295.79





## All-layer scratcher - easy to empty

Special sampler for powders and granules **that do not flow freely**. The sample is transferred to the closable inner tube using a scraper. Sliding PTFE separators are used to divide the inner tube into different zones. The separators also prevent the sample from being mixed.

- For caked bulk materials
- Length 1000 mm, diameter 25 mm
- Variable zones thanks to sliding PTFE separators
- Autoclavable
- Made from AISI 316 stainless steel and PTFE



	5351-1000	5304-0100
Description	All-layer scratcher	Cleaning brush
Diameter mm	25	25
Length mm	1000	1000
Price Each US\$	847.69	72.36

## MicroSampler - useful for taking small samples

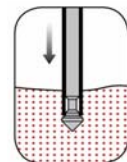
- Two diameters and three lengths available

Specially designed for removal of the smallest quantities of powders.

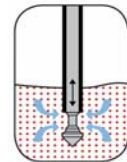
Sample quantities of 0.2 ml, 0.5 ml, 1.0 ml, 2.0 ml, 5.0 ml and 10 ml can be taken at varying depths from sacks or containers in a clean, fast and simple way.

The head of the MicroSampler is interchangeable (not included). This enables heads with different volumes to be used.

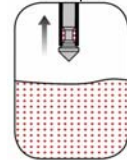
- Exact sampling point can be chosen
- Different volumes and lengths available
- Conforms to GMP/FDA
- Head removable, easy cleaning
- Made of AISI 316 stainless steel



1. Insert MicroSampler into powder.



2. Open volume head at target spot by pushing the button; sample flows in.



3. Close volume head; the sample is collected.



4. Withdraw the lance, open volume head again, and remove the sample.

5307	-1055	-1085	-1120
Length mm	550	850	1200
Tube Diameter mm	12.5	12.5	12.5
Price Each US\$	405.01	449.64	489.37

5307	-2055	-2085	-2120
Length mm	550	850	1200
Tube Diameter mm	25	25	25
Price Each US\$	532.02	569.17	606.53

### HEADS TO FIT MICROSAMPLER

5307	-0102	-0105	-0110
Tube Diameter mm	12.5	12.5	12.5
Volume mL	0.2	0.5	1.0
Price Each US\$	121.88	121.88	121.88

5307	-0202	-0205	-0210
Tube Diameter mm	25	25	25
Volume mL	2.0	5.0	10.0
Price Each US\$	166.33	166.33	166.33

*QuickPicker* | collects samples quickly and channels them directly into the sampling bottle



1. Push the point of QuickPicker into the sack to the desired depth.



2. Pull QuickPicker out again. Sample material is drawn out in the open, half-rounded scoop.



3. Tilt QuickPicker backwards, now the sample falls directly into the sampling bottle.



4. Seal the punctured sack using close-it (see page 31).  
5. Remove sampling bottle, screw on the cap.  
6. Write the sample designation on the bottle.



Unscrewable tip for easy cleaning

Rounded grooves for sure grip

Sampling bottles made of PP,  
Volume 250mL

Stainless steel 316 (1.4401);  
electropolished surface

Volume 75mL

Insertion depth 30 cm

Sampling directly into bottle;  
no cross-contamination

PP, transparent, scratch-proof,  
sterilizable, economically priced



**QuickPicker - quick sample collection and transfer**

Particularly suitable for taking direct samples of bulk goods from sacks, Big-Bags or open containers and then filling them directly into original sample bottles. QuickPicker is uncomplicated to use and clean. No undercuts or edges ensure no sample residues which could falsify subsequent samples. QuickPicker is delivered complete with 2 sample bottles and cleaning brush.

- Sampling depth 30 cm, diameter 25 mm
- Made of AISI 316 stainless steel or transparent PP for aggressive powders
- Sample bottles made of LDPE or PP
- Removable point, easy to clean

The QuickPicker is now also available in polypropylene. Particularly suitable for aggressive dry chemicals. Transparent, scratch-proof, sterilizable, economically priced. Corresponds to ISTA standard for seed lengths of 10 mm (wheat, oats) and 5 mm (flax, vetches).

	①	②
<b>5322</b>	<b>-1300</b>	<b>-0300</b>
Tube material	AISI 316 SS	PP translucent
Insertion length cm	30	30
Total length cm	50	50
Capacity mL	75	75
Price Each US\$	377.11	234.95

<b>SAMPLE BOTTLES</b>	<b>0318-0250</b>	<b>0319-0250</b>
Material	LDPE translucent	PP translucent
Capacity mL	250	250
Pack Quantity	20	10
Price Each US\$	65.92	39.43

<b>ACCESSORIES</b>	<b>3600-3000</b>	<b>5304-0060</b>
Description	Transport case	Cleaning brush
Price Each US\$	53.94	72.36



See Close-it Seals on page 31 "Covers the Hole"

**EasySampler - easy to empty**

New type of sampler for taking numerous samples from bulk materials quickly and easily. Emptying has been greatly simplified and in this model takes place via the tip. The advantage: the sample can be emptied directly into the sample container without having to disassemble the EasySampler, in order to obtain a mixed sample for instance. The bulk material must be free flowing or self-flowing.

- Completely made from AISI 316 stainless steel
- For free-flowing bulk materials
- For sampling openings from 52 mm dia.
- Sample chamber length 500 mm
- Autoclavable



Please note: EasySampler has been developed in cooperation with an international chemical concern based in Ludwigshafen, Germany

	<b>5360-1000</b>
Tube Diameter mm	32
Total Length mm	1045
Capacity mL	200
Price Each US\$	1,132.95







- ① **Multi-Sampler**
- Anodized aluminum
  - Closed chambers
  - Color coding system
  - 25 mm diameter
  - Three lengths



- ② **Multi-Sampler**
- Rust-free stainless steel 316
  - Closed chambers
  - Color coding system
  - 25 mm diameter
  - Three lengths



- ③ **Multi-Sampler**
- Rust-free stainless steel 316 with PTFE collection chambers to lower weight
  - Closed chambers
  - Color coding system
  - 25 mm diameter
  - Three lengths



- ④ **Uno-Sampler**
- Rust-free stainless steel 316
  - Closed Chamber made of PTFE
  - Color coding system
  - 25 mm diameter
  - Three lengths



- ⑤ **All-Layer Sampler**
- Anodized aluminum
  - Rust-free stainless steel 316
  - Open inner tube
  - Large collection volume
  - Without chambers
  - 25 mm diameter
  - Three lengths



- ⑥ **Spiralus Sampler**
- Representative sample of the container layers
  - Aluminum, anodized
  - Tip PA
  - 38 mm Ø
  - Low weight



- ⑦ **Jumbo Sampler**
- Anodized aluminum with PTFE collection
  - Open inner tube
  - Large collection volume
  - 50 mm diameter
  - Three lengths

**Accessories for zone samplers**

CLEANING BRUSHES

- Thorough cleaning of hard to reach areas
- PVC/stainless steel construction

QUALI-PAPER

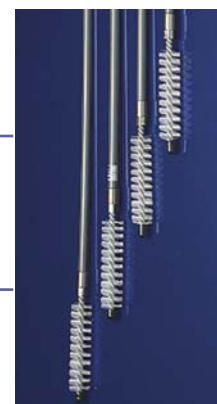
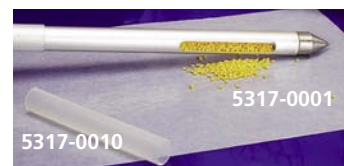
- For emptying the collected samples
- Free from fibers and lint

SEALING SLEEVES

- Sterilizable PP
- Seal individual chambers
- Easy slide on clips into position

ZONE SAMPLER EMPTYING DEVICE

- Emptying device complete with 3 funnels
- Stainless steel (1.4301)
- 100cm length



5304	-0040	-0060	-0080
Description	Brush	Brush	Brush
Length cm	40	60	80
Diameter mm	25	25	25
Price Each US\$	72.36	72.36	72.36

5304	-0100	-5100	-5300
Description	Brush	Brush	Brush
Length cm	100	100	300
Diameter mm	25	50	50
Price Each US\$	70.25	80.12	161.61

5317	-0001	-0010	-0011
Description	Quali-Paper	Sealing Sleeve	Sealing Sleeve
Dimensions	100cm x 23cm	50mm Ø	25mm Ø
Pack Quantity	50	3	3
Price Pack US\$	58.61	57.35	43.99

5317	-0030	-0033
Description	Device with 3 funnels	Emptying funnel separate
Material	V2A	V2A
Price Each US\$	583.17	90.80

## Zone samplers | multi-samples from several predefined sample depths

### MULTI-SAMPLER ALUMINUM, 25 MM DIAMETER\*

① 5317	-1058	-1085	-1150
Total length mm	550	850	1500
Sampling depth mm	430	710	1355
Number of chambers	3	3	5
Chamber capacity mL	14	17	17
Price Each US\$	365.57	406.66	530.09

### MULTI-SAMPLER V4A (AISA 316 SS), 25 MM DIAMETER\*

② 5316	-3055	-3085	-3150
Total length mm	550	850	1500
Sampling depth mm	430	710	1355
Number of chambers	3	3	5
Chamber capacity mL	14	17	17
Price Each US\$	1,086.99	1,164.34	1,473.36

### MULTI-SAMPLER V4A (AISA 316 SS) / PTFE, 25 MM DIAMETER\*

③ 5316	-0055	-0085	-0150
Total length mm	550	850	1500
Sampling depth mm	430	710	1355
Number of chambers	3	3	5
Chamber capacity mL	14	17	17
Price Each US\$	707.68	794.13	1,159.70

### UNO-SAMPLER V4A/PTFE (AISA 316 SS), 25MM DIAMETER\*

④ 5316	-1055	-1085	-1150
Total length mm	550	850	1500
Sampling depth mm	430	710	1355
Number of chambers	1	1	1
Chamber capacity mL	17	17	17
Price Each US\$	721.59	808.31	1,183.06

### ALL-LAYER-SAMPLER ALUMINUM, 25 MM DIAMETER\*

⑤ 5317	-2055	-2085	-2150
Total length mm	550	850	1500
Sampling depth mm	430	710	1355
Number of chambers	3	3	5
Chamber capacity mL	70	130	260
Price Each US\$	321.48	357.75	454.82

### ALL-LAYER-SAMPLER V4A (AISA 316), 25 MM DIAMETER\*

⑤ 5316	-2055	-2085	-2150
Total length mm	550	850	1500
Sampling depth mm	430	710	1355
Number of chambers	3	3	5
Chamber capacity mL	70	130	260
Price Each US\$	995.72	1,148.06	1,382.11

### ZONE-SAMPLER SPIRALUS ALUMINUM, 38 MM DIAMETER

⑥ 5318	-0145	-0200
Total length CM	145	200
Number of chambers	8	8
Chamber capacity mL	770	1100
Price Each US\$	751.96	1,019.25

### JUMBO SAMPLER, 50 MM DIAMETER

⑦ 5319	-1085	-1150	-1250	-2085	-2150	-2250
Material	Aluminum →			Aluminum/PTFE →		
Total length cm	85	150	250	85	150	250
Sampling depth mm	71	136	236	71	136	236
Number of chambers	3	5	7	3	5	7
Chamber capacity mL	880	1700	2900	390	650	910
Price Each US\$	742.50	1,051.35	1,187.41	1,147.70	1,348.85	1,610.98

\*Corresponds to ISTA standard for seed lengths of 10 mm (wheat, oats) and 5 mm (flax, vetches).

**Zone samplers** are used for taking samples of bulk goods of any kind. The big advantage of zone samplers is that all-layer samples can be collected from all layers of the container. Various bulk goods can be collected with the lances, from the finest powder to large grains such as corn or nuts.

The zone samplers are available in four lengths. 55 cm (especially suitable for sacks), 85 cm long (especially for barrels, tubs, mixed containers) and 150 cm as well as 250 cm for big bags, silos, tanks. Safe and reliable sampling is made even easier with useful special accessories such as sealing sleeves, Quali-Paper, cleaning brushes, emptying devices and close-it control seals.

The zone samplers are available in different models for different sampling tasks. Spiralus is particularly suitable for sampling coarse-grained bulk goods, seeds and pellets at locations such as soil heaps, warehouses, trucks, railway goods wagons, etc.



#### Instructions for use:

1. Turn handle to close chamber.
2. Push in sampler to required depth.
3. Turn handle to open chamber, sample flows into chamber.
4. Turn handle to close chamber again.
5. Pull out sampler.
6. Empty chamber onto Quali-Paper.
7. Close container opening with close-it control seal



**All -layer drill - special zone collector for compacted substances**

The all-layer drill is a special zone collector specifically designed for heavily compacted substances. Often it is very difficult or impossible with conventional zone collectors to penetrate media of this type and take a sample extending through all layers. By contrast, the drilling blades of the all-layer drill burrow easily and quickly to the required depth without expending any great force. This makes it easy to take samples of media, even those with high density, and every type of highly compacted powders and granulates.

The all-layer drill thus allows you to take a representative sample through all the layers, even with greatly compressed media.

It is ideal for larger containers, mixed containers, big bags, etc. in the building materials, chemical, pharmaceutical, food and luxury items industries.

5310	-0150
Material	V4A
Length cm	150
Insertion depth mm	1355
Number of openings	5
Chamber volume mL	260
Price Each US\$	2,073.17



*See cleaning brushes  
on page 28.*





**Close-it Food - proven its value repeatedly**

- With steam-lock for hermetically sealed closure.
- No lumping of hygroscopic powders.
- Closure seal that has proven its value repeatedly, even on dusty and slightly moist sacks.
- Can be written on using a pen, pencil or felt tip pen.
- Samples available.

Taking samples from sacks, boxes, Big-Bags, etc. with sampling lances is a common and time-proven practice. This produces holes through which easily flowing bulk goods could escape from the container. Sealing these holes saves waste and expense.

**Close-it** and **Close-it food** sealing labels have been specially developed for this purpose. The label has a sandwich-type structure (aluminum/paper) and seals the container hermetically (vapor barrier). This virtually prevents hygroscopic powders from clumping together. The label is not just used to provide a hermetic seal. It is also used for providing quality control information (sampling date, release yes/no, name of tester, etc.).

The label is available with printing in red and white. "Close-it" can be written on with ball-point pen, pencil or felt-tip marker. Other colors are available.

The rear of the label is coated with a powerful adhesive so that "Close-it" sticks firmly to most commercial containers, even to surfaces coated with fine powder where conventional labels or adhesive tape will not adhere. "Close-it", the original, will even stick to slightly moist surfaces. The "Close-it" dispenser ensures safe storage and simple removal of the labels. A built-in marking plate allows the labels to be conveniently written on.

**Close-it food** is for use with foodstuffs. The adhesive on the label complies with European and FDA requirements for direct contact with dry, moist and fatty foodstuffs, European Directives 1935/2004/EU and 2011/10/EU and FDA 176.170 + 175.180 + 178.3620 + 178.3910.

Like the original Close-it, "**Close-it food**" has a barrier layer of aluminum foil. This means that "Close-it food" is suitable for sealing the packaging of foodstuffs, pharmaceuticals, cosmetics, food additives – in short, for all applications in which the product must not be contaminated by contact with the adhesive.

Supplied in the proven size of 95 x 95 mm in rolls each with 500 control seals or in 150 x 150 mm in rolls of 250 seals.



**CLOSE-IT**

5303	-0012	-0002	-1012	-1002
Color	red	white	red	white
Description	printed	unprinted	printed	unprinted
Size mm	95 x 95	95 x 95	150 x 150	150 x 150
Labels per roll	500	500	250	250
Price per roll US\$	125.17	125.17	175.42	175.42

**CLOSE-IT FOOD**

5303	-2017	-2018	-3017	-3018
Color	Red	White	Red	White
Description	printed	unprinted	printed	unprinted
Size mm	95 x 95	95 x 95	150 x 150	150 x 150
Labels per roll	500	500	250	250
Price per roll US\$	125.17	125.17	175.42	175.42

**ACCESSORIES**

5303	-9000	-9100
Description	Dispenser for labels 95 x 95 mm	Dispenser for labels 150 x 150 mm
Price each US\$	149.47	209.63





### Close-it Tape - for holes and tears in bags or sack like packaging

Available in rolls of 50 meters. Use "Standard" product for non food items such as chemical bags and use "Food" tape for food item packaging. The "Food" tape has an adhesive that is food compatible. Use on paper, burlap and other typically adhesive repellent surfaces.

Close-it Tape has an extremely strong adhesive strength and will stick to many diverse substrates. White in color with gridded dots for cutting, it can be labeled with permanent ink.

Use a small piece for closing a small hole or for marking a specific point. Or repair a large hole or a long tear quickly, reliably and easily. Supplied in the proven size of 95 x 95 mm in rolls each with 500 control seals or in 150 x 150 mm in rolls of 250 seals.

5303	-0017	-1017	-2019	-3019
Description	Standard	Standard	Food	Food
Width mm x Length Meter	95x50	150x50	95x50	150x50
Price per Roll \$	125.17	175.42	125.17	175.42



### SampleSafe Seal PP - secures bottles and jars with eyelets

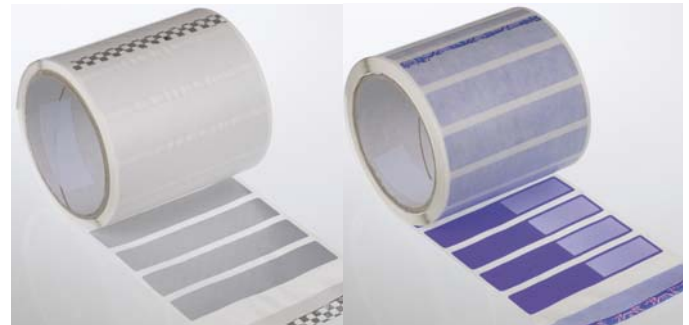
These seals are made of stable polypropylene and consist of a 270mm seal ring and a tab. The tab is uniquely identified with a serial 9 digit number. The seal ring diameter is 2mm, thin enough to fit through small eyelets and slits. The seal tab is secured by inserting the seal ring through the container eyelet and then through a one-way hole in the tab until it is pulled tight. The container is now Tamper evident. 2mm Diameter

5399-2902      SampleSafe Seal PP Red      \$181.47 Pack of 100

### Seal-it Security Seal - to seal retention sample containers and to tamper-proof packaging

Use Seal-it Security Seals with a unique identification number to tamper proof containers such as bottles, sample bags, sacks, specimen bags, envelopes etc. The powerful adhesive sticks to all conventional containers and the inherent aluminum foil adapts to any container shape. If manipulated, the cross perforations tear. Seal-it cannot be removed without being torn or destroyed, providing tamper evident proof! Product has a white labeling area for marking with all conventional writing tools: e.g. list contents, sampling date, names etc. An integrated control label with the same ID number can be applied to accompanying documents. Dimensions: 178mm x 30mm (l x w)

5399-0003      Seal-it Security Seals, Red      \$248.70 Roll of 500



### Tamper Proof Labels

**Safe-it** and **Secure-it** can be used as tamper evident security labels designed for sealing containers as well as letters, parcels etc. They provide a visual indicator of any tampering of critical samples. If removed, the label divides into separate layers. A hidden pattern then appears on the surface which is permanent. The glue also leaves a residue on the surface that cannot be removed. Dimensions: 95mm x 20mm (l x w).

**Safe-it** Tamper Proof Labels (left in above images): Breaking the security seal reveals visible proof of tampering. A silver checkerboard pattern appears on both the subsurface and surface of the sticker.

**Secure-it** Tamper Proof Labels (right in above images): Secure-it is similar to Safe-it but has a marking area for notes and comments. Like Safe-it, breaking the security seal of a Secure-it label reveals visible proof of tampering. A bright purple stop sign pattern appears on both the subsurface and surface of the label.

5303-5000      Safe-it Tamper Proof Labels      \$190.23 Roll of 500  
5303-5010      Secure-it Tamper Proof Labels      \$256.72 Roll of 500

## Customer Questionnaire | to determine appropriate sampling product

Please provide answers to the below questions then fax to 585-334-0241 or e-mail loninfo@dyna-labware.com to assist us in choosing the appropriate sampling apparatus to fit your needs.

### Samplers:

1. What are you sampling? Is it a grain, seed, liquid, powder or viscous substance (e.g. paste, honey etc.), other?

---

---

2. What size sample quantity is needed for analysis? List all possible sample quantities that will be required.

---

---

3. How large is the opening for inserting the sampling device? We need to make certain the device has the correct diameter.

---

4. From where do you want to take the sample: large bag, sack, drum, silo, other? \_\_\_\_\_

---

5. What is the length of the device needed or what is the depth of the sample required? \_\_\_\_\_

6. What kind of sample do you need?

- An all layer sample for cross section analysis? \_\_\_\_\_
- A target sample from a specific depth? \_\_\_\_\_
- Multi-samples from predetermined depths? \_\_\_\_\_

7. Do you need Single Use Samplers to minimize cleaning or prevent contamination? \_\_\_\_\_

Sterile \_\_\_\_\_ or Non-sterile \_\_\_\_\_

8. Accessories: after taking a sample, consider items you might need like: Close-It seals, Cleaning brushes, an Emptying Device, Sample Bags or Bottles. \_\_\_\_\_

9. ADDITIONAL NOTES: \_\_\_\_\_

---

### Pumps:

1. Which type of substance do you want to transfer (Alkali/Acid/Solvent)? \_\_\_\_\_

2. Is the substance Flammable \_\_\_\_\_ or Non-Flammable? \_\_\_\_\_

3. What is the concentration of the substance ( e.g. nitric acid 10%...)? \_\_\_\_\_

4. How often do you want to transfer the substance? \_\_\_\_\_

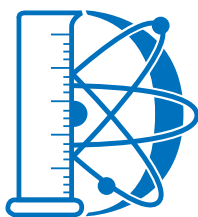
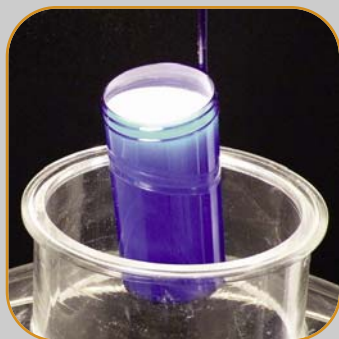
5. What volume do you need per use? \_\_\_\_\_

6. What is the capacity ( in liters or gallons ) and also the ID of the opening of the container or drum etc.? \_\_\_\_\_

Company \_\_\_\_\_ Contact Name \_\_\_\_\_

Telephone \_\_\_\_\_ Email \_\_\_\_\_

Proud to be your  
**supplier of choice**  
for over 60 years



**Dynalab®**  
**Labware**

175 Humboldt Street, Suite 300  
Rochester, NY 14610  
Telephone 800-334-7585  
Fax 585-334-0241  
[www.dynalab.com](http://www.dynalab.com)

Dynalab® is a federally registered trademark owned by Dynalab Corp.

Copyright Dynalab Corp. 2019 and earlier.